

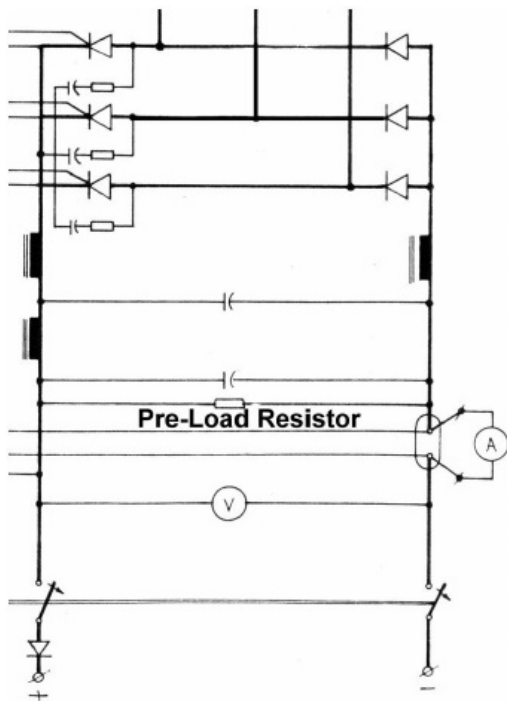


## Improvement of Internal Circuits of the Mobile Battery Charger

Winterfeld type mobile battery chargers use SCRs (thyristors) as active elements for adjusting the output voltage. Voltage regulators based on the SCRs required some minimal current for proper operation. This requirement does not allowed precise adjust-



ment of the output voltage level in the idle mode (such adjustment required for proper battery charging process). An additional resistor unit (pre-load resistor) has solved this problem.



**Additional Resistors Unit  
(pre-load resistor)**

